


TECHNICAL SPECIFICATION	<p>EPIC Studios 112-114 Magdalen Street Norwich Norfolk NR3 1JD TEL: 01603 727 727 EMAIL: hello@epic-tv.com WEB: www.epic-tv.com</p>
--------------------------------	--

VENUE CONTACTS		
Harry Ross	Head of Technical	Harry.ross@epic-tv.com
Jordan Hambling	Sound Engineer	Jordan.hambling@epic-tv.com
Laura Rycroft	General Manager	Laura.rycroft@epic-tv.com
Rick Lennox	Live Music Manager	Rick.lennox@epic-tv.com
Elise Gedge	Events Manager	Elise.gedge@epic-tv.com

VENUE INFORMATION	
About	<p>Epic Studios is an exceptional multi-purpose venue that hosts live music, club nights, comedy, and arena sports for audience numbers of up to 900 welcoming the most thrilling live acts from around the globe as well as the most exciting local talent.</p> <p>Boasting a state-of-the-art concert-space, including world-renowned Martin Audio MLA sound system (Glastonbury, Hyde Park) and a profoundly-skilled technical team; the ethos of Epic is focused on pioneering spotless acoustics & dazzling optical displays to the delight of both artists' and gig-goers'; unquestionably ingraining the venue's reputation as having the best sound and visual effects in East Anglia.</p>
Gross Capacity	<p>Standing: Up to 850 sellable cap Unreserved Seated: Up to 580 person</p>
Production Office	Yes – Including dedicated Wi-Fi access and refreshments
Standard Dressing Rooms	<p>Standard Dressing Rooms x 2 Including Sink, Hair Dryer, TV Standard Green Room Including Fridge, Sofas</p>
VIP Dressing Rooms	<p>VIP Dressing Rooms x 2 Including Shower, Fridge, Sink, Hair Dryer, TV, Mirror, Safe</p>

Internet Access	Lease Line: Up to 100mbps available up and down. WIFI Passwords available on arrival.
Catering	In-house catering can be arranged through advance discussion. Please contact General Manager in the first instance.
Merchandise Commission	We do not charge merch commission
Towels	Towels can be hired with advance notice- please contact General Manager. £2.00 charge per towel.
Ticketing	Epic Studios sells tickets through our own website (www.epic-tv.com) as well as www.ticketsource.com and SEE Tickets.
Local Transport	Norwich Rail Station- NR1 1EF / Norwich Airport- NR6 6JA / Norwich Bus Station- NR1 3GX

LOAD IN

Information	Load in address: Edward Street, Norwich NR3 1JD Flat load in via large street level loading bay then five tonne goods lift directly to studio floor.
Parking	<p>Epic Studios has limited onsite parking. A pay and display car park is located next door to the venue. Please note that the marked car parking spaces adjoining the venue on Beckham Place are NOT Epic Studios' property and will incur parking tickets through licence plate recognition.</p> <p><i>Truck/Bus Parking Instructions</i></p>  <p>2 x Splitter vans may be permitted to park in loading bay with prior permission from General Manager.</p> <p>Trucks and buses should station themselves facing west along Edward Street.</p>

Bus Power	We have both 16A, 32A Single Phase and 32A 3 phase power available from 9am charged at £7.00 per hour until venue lockup. We cannot leave power out overnight under any circumstances.
Crew	Two members of venue technical staff will be on hand during your booking to assist with load in/out. Any further local crew can be arranged by contacting the Technical Manager.
Security	Rostered at General Manager's discretion.

RIGGING	
Clearance	15.41 Feet (4.7m) from floor to truss.
Rated flying weight	I beam rated flying weight 300KG UDL.
Pantographs and Truss	170 Motorised pantographs at a SWL of 37kg as well as various lengths of truss raised by manual chain hoists.
STAGING	
Stage Type	Steeldeck 8' x 4' x 12 Hexadeck 8' x 4' x 10 Unistage 1' High Riser 8' x 8' x 20
Stage Height	1m
Stage Standard Dimensions	12M x 4.8M
Barrier	Steel Mojo Barrier 1m x 28 Aluminium Crowd Barrier 2m x 20
Lightspace Deck	Can be added for an additional cost – Please contact the Technical Manager in the first instance.
Upto 12m x 6.8m	2mx1m x 17 1mx1m x 2 Note This reduces capacity.
POWER	
Visiting Productions	125A Three Phase Ceeform (LOCATED AT REAR OF STUDIO 30m TO STAGE) 2X 63A Single Phase Ceeform 1X 32A Three Phase Ceeform 16A Single Phase Ceeform 13A Sockets (Note we do not have 63A 3ph) (See studio plot for locations)

AUDIO SPECIFICATION	
Noise Curfew	No show volume (Pink noise and line checks only) pre-5pm on weekdays. Strictly no amplified sound beyond 23.00 on weekdays. We can extend our licence for certain events with prior arrangement. Weekend events have no starting curfew. Please note that we implement at 97dba limit over a 10 minute period.
FOH PA	Martin Audio MLA Compact x 12 Martin Audio DSX 2 x 18" Subs x 8 Removal of house PA for visiting systems will be charged to the hirer to cover labour costs of de-rigging and re-rigging the house system.
Fills	D&B E3 (Covering bar area) x 8 (Used as required) Martin Audio CDD-LIVE 15 x1
Monitoring	Martin Audio CDD-LIVE 15 x 4 Martin Audio LE200 15" Coaxial Monitors x 8 Martin Audio iK81 Amplifier x 1
Mixing Desks	Allen & Heath Dlive S7000 Allen & Heath SQ7
Digital Multicore	Allen & Heath DM48 48 channel MixRack Equipped with DANTE, gigaACE and MADI option cards for digital splits. A 32 way analogue split can be provided if needed.
MICROPHONES, MIC STANDS AND D.I. BOXES	
Microphones	Shure: SM57 x4, Beta58 x3, SM58 x5, Beta91, Beta 52A, Beta56A x2, KM141 Sennheiser: E604 x4, SKM 5200-II BK-L Wireless x2, MD421 x2 AKG: C451B, C460 B x2, C414 x4 Audix: D2 x2, i5, D4, D6 Beyerdynamic: CK703 x3
Microphone Stands	Assorted tall & short stands by Beyer/K&M
DI Boxes	BSS AR133 x 6 Radial Pro D2 stereo passive x 1

LIGHTING & SFX	
Control	Avolites D9 330 V16 Avolites Q3 media server Avolites TNP V16 Avolites Tiger Touch II – V15.1 plus side wing
Dimming	360 x channels of ETC Sensor dimming

	Available via motorised pantographs and wall patch boxes
Generics	1k Studio Fresnel x 30 2k Studio Fresnel x 20 5k Studio Fresnel x 20 Source 4 x 4 Long Nose Par x 20 – Available with 60,61,62,88 Lamps Space Light 6000W x 4
Specials	Robe T1 profile x12 Robe Robin 350 x20 Robe Tetra X x12 Vari VI1000 x 4 Chauvet Led Spot 250 x 4 Studio Due CS-4 x 4 Chromlec Jarag 5 x 8 Sunstrip x 20 Philips SL e-strip 10 x 12 – Available with or without barn doors
Follow Spot	1500w Follow Spot x 2
Lasers	Laserworld Tarm 6 (Upgraded to 60kkps) x 2 – Controlled via Pangolin 20w FB4 Animation laser x4 Quickshow – FB4 fitted within the Lasers
SFX	Martin Atomic 3000 Strobe x 8 Unique Hazer 2.1 x 2 Jem Glaciator x 1 Jem ZR30 x 1 Jem Stage Hazer x 1 CO2 Cannon x 4 (Additional Charges Apply) Lemaitre Pyro Technics (Additional Charges Apply) Chauvet Fun Fetting x 2(Additional Charges Apply) Spark Generators x2(Additional Charges Apply) MAGIC FX Stadium Blaster x2(Additional Charges Apply)

Video & Production	
Video Wall & Displays	18 x NEC UNV464 LED Monitors arranged in a horizontal line 20 x Martin LC 2140 LED Wall Panels 30x 3.8mm pitch 750x500mm led panels. 8x 3.8mm pitch 1000x500mm led panels Novastar MCTRL4K controller (5mx3m section flown upstage. 2x 2mx1m moveable panels on stage)
Projection	3 X Christie LWU 505 Projectors and screens.
Filming	Filming Packages available from our Broadcast Team. Ranging from basic single camera shoot up to full multi-camera coverage. Customisable to budget. Please ask to see our full brochure of packages.

Consumables will be charged additionally. Please observe the standard in house studio plot. Any additional rigging will be charged accordingly.



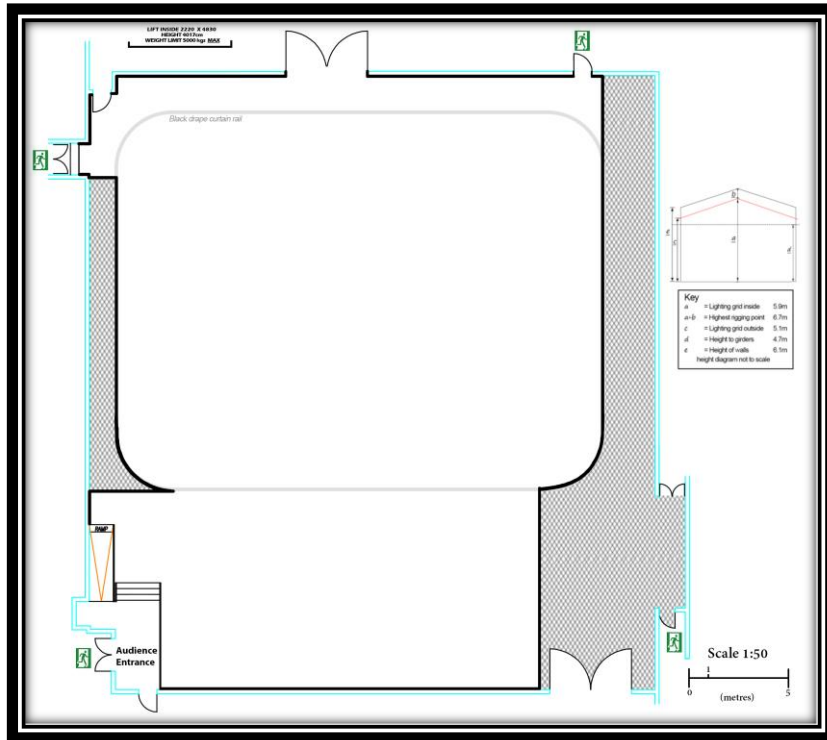
Health & Safety

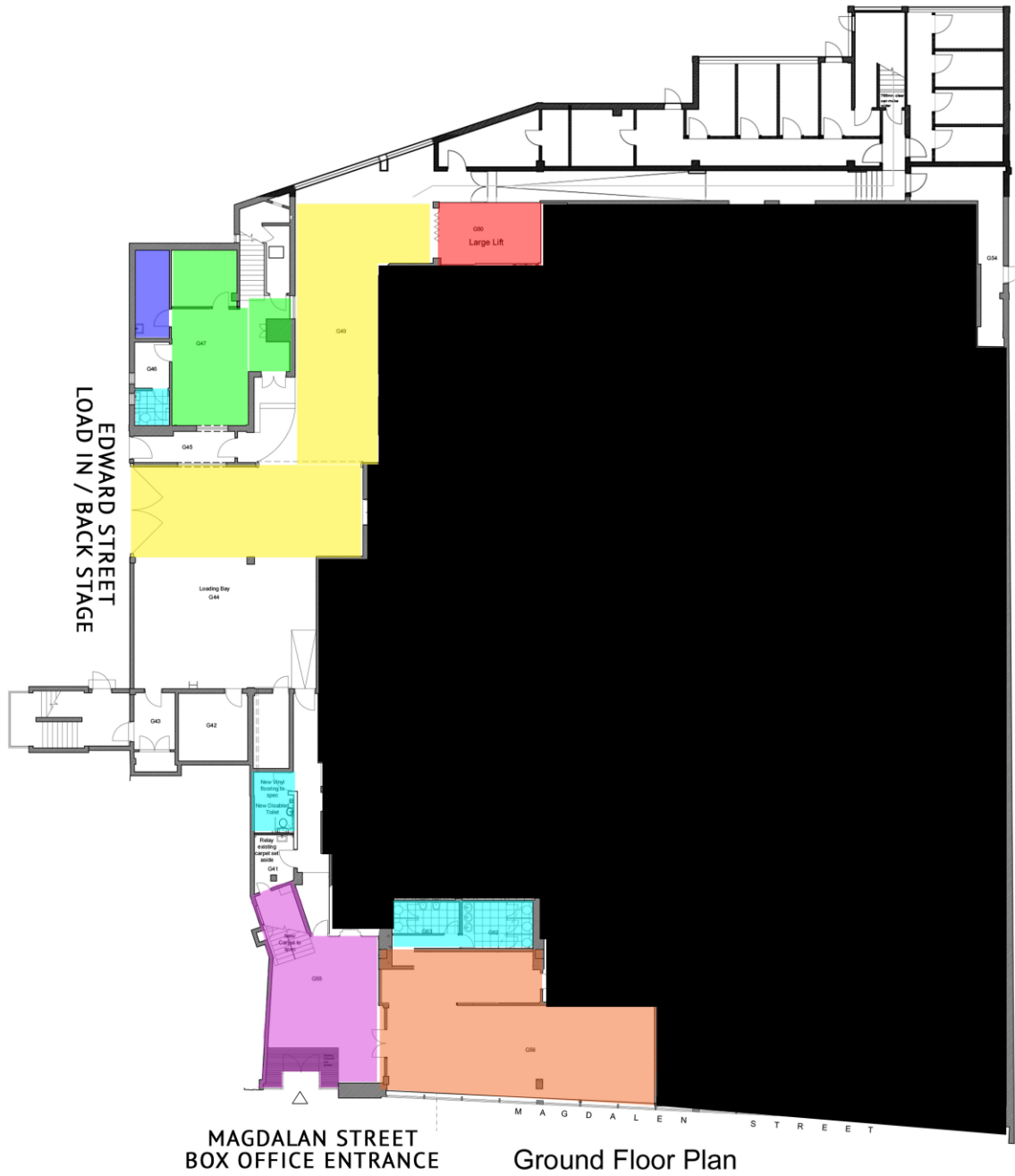
PAT Testing

All equipment brought into Epic Studios **must** have a current Portable Appliance Test (PAT) certification. Epic Studios' management reserve the right to refuse permission for event organisers to use equipment if a valid certificate cannot be produced.

Materials

All materials brought into Epic Studios **must** be fully fireproofed.

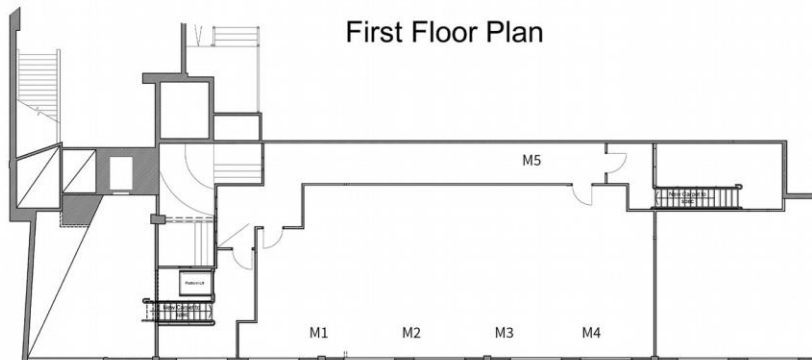




- Load in Yard
- 5 Ton Load in Lift
- Main Epic Office
- First Aid Room
- Toilets
- Box office / Customer Entrance
- Cafe



First Floor Plan



Mezzanine Plan