


<b>TECHNICAL SPECIFICATION</b>	<p>EPIC Studios          112-114 Magdalen Street          Norwich          Norfolk          NR3 1JD  <b>TEL:</b> 01603 727 727  <b>EMAIL:</b> <a href="mailto:hello@epic-tv.com">hello@epic-tv.com</a>  <b>WEB:</b> <a href="http://www.epic-tv.com">www.epic-tv.com</a></p>
--------------------------------	--

<b>VENUE CONTACTS</b>		
<b>Harry Ross</b>	Technical Manager	<a href="mailto:Harry.ross@epic-tv.com">Harry.ross@epic-tv.com</a>
<b>Laura Rycroft</b>	General Manager	<a href="mailto:Laura.rycroft@epic-tv.com">Laura.rycroft@epic-tv.com</a>
<b>Rick Lennox</b>	Live Music Manager	<a href="mailto:Rick.lennox@epic-tv.com">Rick.lennox@epic-tv.com</a>
<b>Elise Gedge</b>	Events Manager	<a href="mailto:Elise.gedge@epic-tv.com">Elise.gedge@epic-tv.com</a>

<b>VENUE INFORMATION</b>	
<b>About</b>	<p>Epic Studios is an exceptional multi-purpose venue that hosts live music, club nights, comedy, and arena sports for audience numbers of up to 900 welcoming the most thrilling live acts from around the globe as well as the most exciting local talent.</p> <p>Boasting a state-of-the-art concert-space, including world-renowned Martin Audio MLA sound system (Glastonbury, Hyde Park) and a profoundly-skilled technical team; the ethos of Epic is focused on pioneering spotless acoustics &amp; dazzling optical displays to the delight of both artists' and gig-goers'; unquestionably ingraining the venue's reputation as having the best sound in East Anglia.</p>
<b>Gross Capacity</b>	<p>Standing: Up to 850 sellable cap            Unreserved Seated: Up to 580 person</p>
<b>Production Office</b>	Yes – Including dedicated Wi-Fi access and refreshments
<b>Standard Dressing Rooms</b>	<p>Standard Dressing Rooms x 2            Including Sink, Hair Dryer, TV            Standard Green Room            Including Fridge, Sofas</p>
<b>VIP Dressing Rooms</b>	<p>VIP Dressing Rooms x 2 - £50 each            Including Shower, Fridge, Sink, Hair Dryer, TV, Mirror, Safe</p>
<b>Internet Access</b>	<p>Lease Line: Up to 100mbps available up and down.            WIFI Passwords available on arrival.</p>

<b>Catering</b>	In-house catering can be arranged through advance discussion. Please contact General Manager in the first instance.
<b>Merchandise Commission</b>	We do not charge merch commission
<b>Towels</b>	Towels can be hired with advance notice- please contact General Manager. £1.50 laundry charge per towel.
<b>Ticketing</b>	Epic Studios sells tickets through our own website ( <a href="http://www.epic-tv.com">www.epic-tv.com</a> ) as well as <a href="http://www.ticketsource.com">www.ticketsource.com</a> and SEE Tickets.
<b>Local Transport</b>	<b>Norwich Rail Station-</b> NR1 1EF / <b>Norwich Airport-</b> NR6 6JA / <b>Norwich Bus Station-</b> NR1 3GX

## LOAD IN

<b>Information</b>	Load in address: <b>Edward Street, Norwich NR3 1JD</b> Flat load in via large street level loading bay then five tonne goods lift directly to studio floor.
<b>Parking</b>	<p>Epic Studios has limited onsite parking. A pay and display car park is located next door to the venue. Please note that the marked car parking spaces adjoining the venue on Beckham Place are <b>NOT</b> Epic Studios' property and will incur parking tickets through licence plate recognition.</p> <p><i>Truck/Bus Parking Instructions</i></p>  <p>2 x Splitter vans may be permitted to park in loading bay with prior permission from General Manager.</p> <p>Trucks and buses should station themselves facing west along Edward Street.</p>
<b>Bus Power</b>	We have both 16A and 32A <b>Single Phase</b> power available from 9am

	until venue lockup. We cannot leave power out overnight under any circumstances.
<b>Crew</b>	Two members of venue technical staff will be on hand during your booking to assist with load in/out. Any further local crew can be arranged by contacting the Technical Manager.
<b>Security</b>	Rostered at General Manager's discretion.

## RIGGING

<b>Clearance</b>	15.41 Feet (4.7m) from floor to truss.
<b>Rated flying weight</b>	I beam rated flying weight 300KG UDL.
<b>Pantographs and Truss</b>	170 Motorised pantographs at a SWL of 37kg as well as various lengths of truss raised by manual chain hoists.
<b>STAGING</b>	
<b>Stage Type</b>	Steeldeck 8' x 4' x 12 Hexadeck 8' x 4' x 10 Unistage 1' High Riser 8' x 8' x 20
<b>Stage Height</b>	1m
<b>Stage Max Dimensions</b>	12M x 4.8M
<b>Barrier</b>	Steel Mojo Barrier 1m x 28 Aluminium Crow Barrier 2m x 20
<b>Lightspace Deck</b>	Can be added for an additional cost – Please contact the Technical Manager in the first instance. 2mx1m x 17 1mx1m x 2
<b>POWER</b>	
<b>Visiting Productions</b>	125A Three Phase Ceeform 63A Single Phase Ceeform 32A Three Phase Ceeform 16A Single Phase Ceeform 13A Sockets (See studio plot for locations)

## AUDIO SPECIFICATION

<b>Noise Curfew</b>	<b>No show volume (Pink noise and line checks only) pre-5pm on weekdays. Strictly no amplified sound beyond 23.00 on weekdays. We can extend our licence for certain events with prior arrangement. Weekend events have no starting curfew.</b>
<b>FOH PA</b>	Martin Audio MLA Compact x 12 Martin Audio DSX 2 x 18" Subs x 8 <b>Removal of house PA for visiting systems will be charged to the hirer to cover labour costs of de-rigging and re-rigging the house system.</b>
<b>Fills</b>	Martin Audio CDD-LIVE 15 x 4 D&B E3 (Covering bar area) x 8 Used as required
<b>Monitoring</b>	Martin Audio LE200 15" Coaxial Monitors x 8 Martin Audio CDD-LIVE 18" Sub + CDD-Live 15" (Drum Fill) x 1 Yamaha P5000s Amplifiers x 2 Yamaha P3500s Amplifiers x 2
<b>Mixing Desks</b>	Allen & Heath Dlive S7000 Allen & Heath SQ7
<b>Digital Multicore</b>	Allen & Heath DM48 48 channel MixRack Equipped with DANTE, gigaACE and MAD1 option cards for digital splits. A 48-way analogue split can be provided if needed.
<b>MICROPHONES, MIC STANDS AND D.I. BOXES</b>	
<b>Microphones</b>	<b>Shure:</b> SM57 x4, Beta58 x4, SM58 x 4, Beta91 <b>Sennheiser:</b> E604 x 3 <b>AKG:</b> C451B <b>Rode:</b> NT5 x 2
<b>Microphone Stands</b>	Assorted tall & short stands by Beyer/K&M
<b>DI Boxes</b>	BSS AR133 x 6 LD 02 active x 4 EMO stereo passive x 1

## LIGHTING & SFX

<b>Control</b>	Avolites Tiger Touch II – Version 15 plus side wing Capability of 8 DMX universes
<b>Dimming</b>	360 x channels of ETC Sensor dimming Available via motorised pantographs and wall patch boxes
<b>Generics</b>	1k Studio Fresnel x 30 2k Studio Fresnel x 20 5k Studio Fresnel x 20 Source 4 x 2 Long Nose Par x 20 – Available with 60,61,62,88 Lamps

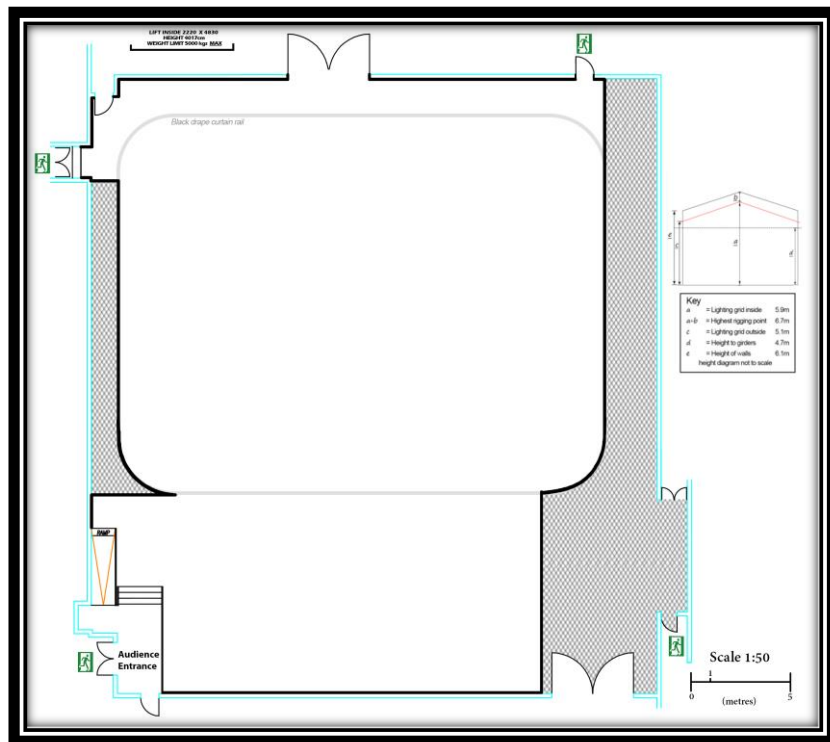
	Space Light 6000W x 4
<b>Specials</b>	Clay Packy Alpha Beam 700 x 20 Vari VI1000 x 4 Chauvet Led Spot 250 x 4 Studio Due CS-4 x 4 Mac 2000 x 4 Chromlec Jarag 5 x 8 Sunstrip x 20 Philips SL e-strip 10 x 12 – Available with or without barn doors
<b>Follow Spot</b>	1500w Follow Spot x 2
<b>Lasers</b>	Laserworld Tarm 6 (Upgraded to 60kkps) x 2 – Controlled via Pangolin Quickshow – FB4 fitted within the Lasers
<b>SFX</b>	Martin Atomic 3000 Strobe x 6 Unique Hazer 2.1 x 2 Jem Glaciator x 1 Jem ZR3 x 1 Jem Stage Hazer x 1 CO2 Cannon x 4 Lemaitre Pyro Technics Chauvet Fun Fettig x 2

## Video & Production

<b>Video Wall &amp; Displays</b>	18 x NEC UNV464 LED Monitors arranged in a horizontal line 20 x Martin LC 2140 LED Wall Panels
<b>Projection</b>	3 X Christie LWU 505 Projectors and screens.

**Consumables will be charged additionally. Please observe the standard in house studio plot. Any additional rigging will be charged accordingly.**





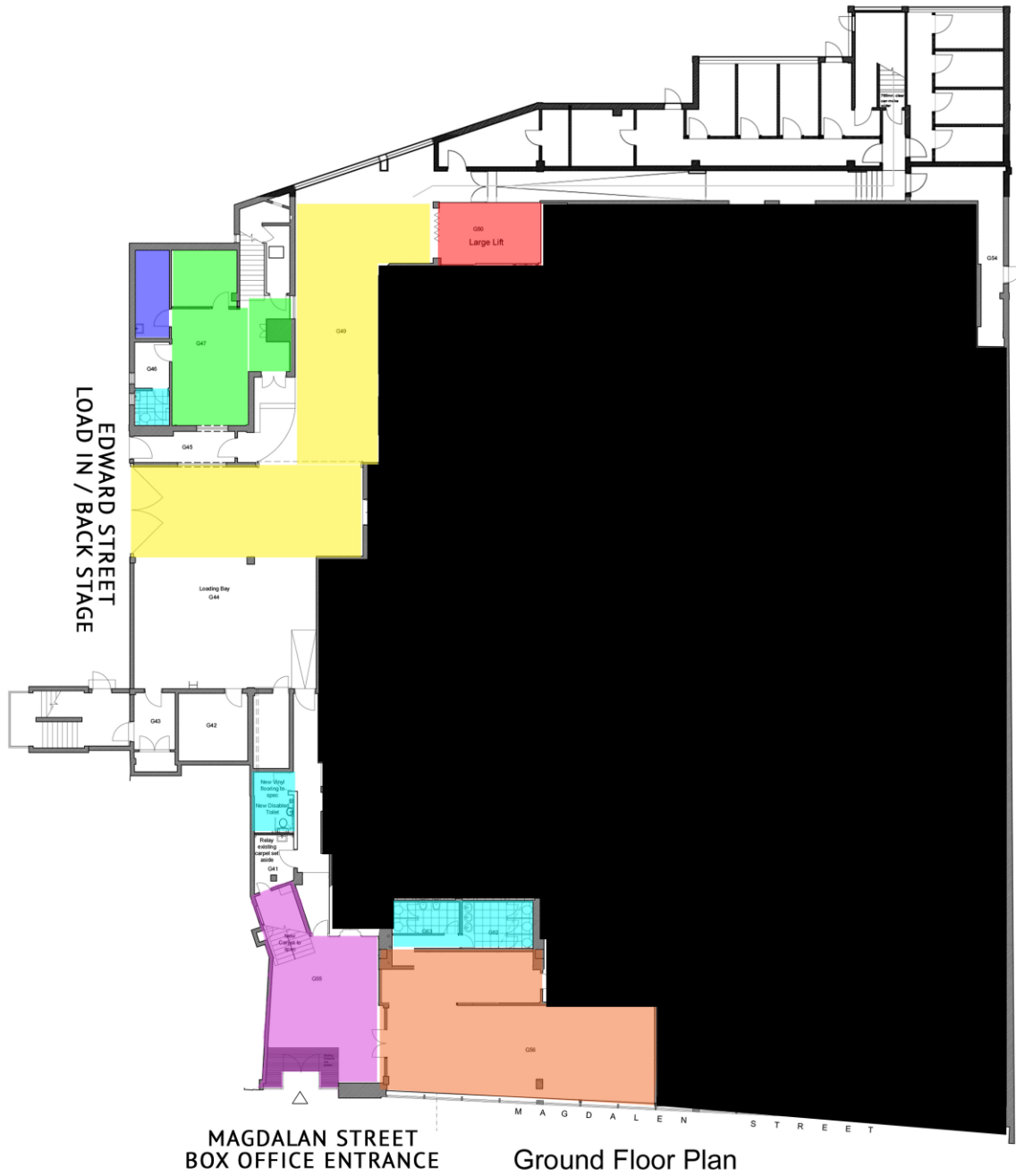
## Health & Safety

### PAT Testing

All equipment brought into Epic Studios **must** have a current Portable Appliance Test (PAT) certification. Epic Studios' management reserve the right to refuse permission for event organisers to use equipment if a valid certificate cannot be produced.

### Materials

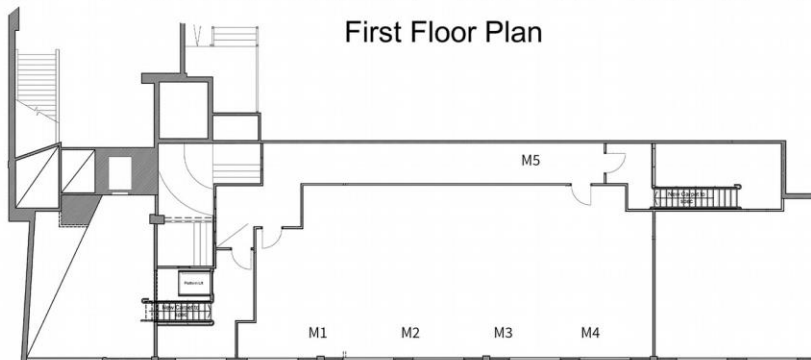
All materials brought into Epic Studios **must** be fully fireproofed.



- Load in Yard
- 5 Ton Load in Lift
- Main Epic Office
- First Aid Room
- Toilets
- Box office / Customer Entrance
- Cafe



First Floor Plan



Mezzanine Plan