



EPIC Studios
112-114 Magdalen Street
Norwich
Norfolk
NR3 1JD
TEL: 01603 727 727
EMAIL: info@epic-tv.com
WEB: www.epic-tv.com


Technical Specification
Correct as of February 2019

VENUE CONTACTS

Matt Rabong	Technical Manager	matt.rabong@epic-tv.com
Kris McCarthy	Operations Manager	kris.mccarthy@epic-tv.com
Jamie Knights	Director of Photography	jamie.knights@epic-tv.com
Rick Lennox	Live Music Manager	rick.lennox@epic-tv.com

Venue Information

About	Formerly the home of ITV Anglia, Epic Studios is a multi-purpose venue suitable for live music, conferences, sporting events and much more- boasting a 6,500 sq. ft. blank canvas studio floor and unrivalled sight lines available in multiple bespoke configurations. The facility is fully equipped for high definition broadcast recording and live streaming, offering a seven camera setup and professional production gallery.
Gross Capacity	Standing: Up to 900 persons plus guests. Seated: Up to 700 persons plus guests.
Tiered Seating	In house. Movable with up to 120 seated.
Production Office	Yes- including dedicated wifi access and refreshments.
Dressing Rooms	5, holding up to 12 persons each. Sink / TV / fridge / hairdryer / 2 x mirrors in each. 1 x Shower
Internet Access	Lease Line: Up to 100mbps available up and down. WIFI Passwords available on arrival.
Catering	In-house catering can be arranged through advance discussion. Please contact Operations Manager in the first instance.
Merchandise Commission	Shows over 300 capacity – 10% of sales. For shows under 300 capacity we do not charge commission.
Towels	Towels can be hired with advance notice- please contact Operations Manager. £1.50 laundry charge per towel.

Ticketing	Epic Studios sells tickets through our own website (www.epic-tv.com) as well as www.ticketsource.com .
Local Transport	Norwich Rail Station- NR1 1EF / Norwich Airport- NR6 6JA / Norwich Bus Station- NR1 3GX
Load In	
Information	Load in address: Edward Street, Norwich NR3 1JD Flat load in via large street level loading bay then five tonne goods lift directly to studio floor.
Parking	<p>Epic Studios has limited on site parking. A pay and display car park is located next door to the venue. Please note that the marked car parking spaces adjoining the venue on Beckham Place are NOT Epic Studios' property and will incur parking tickets through licence plate recognition.</p> <p><i>Truck/Bus Parking Instructions</i></p>  <p>2 x Splitter vans may be permitted to park in loading bay with prior permission from Operations Manager. Trucks and buses should station themselves facing west along Edward Street.</p>
Bus Power	We have both 16A and 32A Single Phase power available from 9am until venue lockup. We cannot leave power out overnight under any circumstances.
Crew	Two members of venue technical staff will be on hand during your booking to assist with load in/out. Any further local crew can be arranged by contacting the Technical Manager.
Security	Rostered at Operations Manager's discretion.
Rigging	
Clearance	15.41 Feet (4.7m) from floor to girders.
Rated flying weight	300kg uniformly distributed load per girder.
Pantographs and Truss	200 Motorised pantographs at a SWL of 37kg as well as various lengths of truss raised by manual chain hoists.

Staging	
Stage Type	Steeldeck 8' x 4' x 12 Hexadeck 8' x 4' x 10 Unistage 1' High Riser 8' x 8' x 20
Stage Height	1m
Stage Max Dimensions	25' x 20' / 7.6M x 6M
Barrier	28m of steel mojo style crowd barrier available for front of stage and FOH position. 'Bike rack' pedestrian barrier for light use.
Power	
Visiting Productions	125A Three Phase Ceeform 63A Single Phase Ceeform 32A Three Phase Ceeform 16A Single Phase Ceeform 13A Sockets

Audio Specification		
Noise Curfew	No show volume (Pink noise and line checks only) pre-5pm on weekdays. Strictly no amplified sound beyond 23.00 on weekdays. We can extend our licence for certain events with prior arrangement. Weekend events have no starting curfew.	
FOH PA	Martin Audio MLA Compact	12
	Martin Audio DSX 2 x 18" Subs	8
	Removal of house PA for visiting systems will be charged to the hirer to cover labour costs of rigging and re-rigging the house system.	
Fills	Martin Audio CDD-LIVE 15	4
	D&B E3 (Covering bar area)	8
Monitor System	Martin Audio LE200 15" Coaxial Monitors	8
	Martin Audio CDD-LIVE 18" Sub + CDD-Live 15" (Drum Fill)	1
Mixing Desks	Allen & Heath Dlive S7000 Allen & Heath SQ7 Allen & Heath QU-16	
Digital Multicore	Allen & Heath DM48 48 channel MixRack Equipped with DANTE, gigaACE and MAD1 option cards for digital splits. A 48 way analogue split can be provided if needed.	

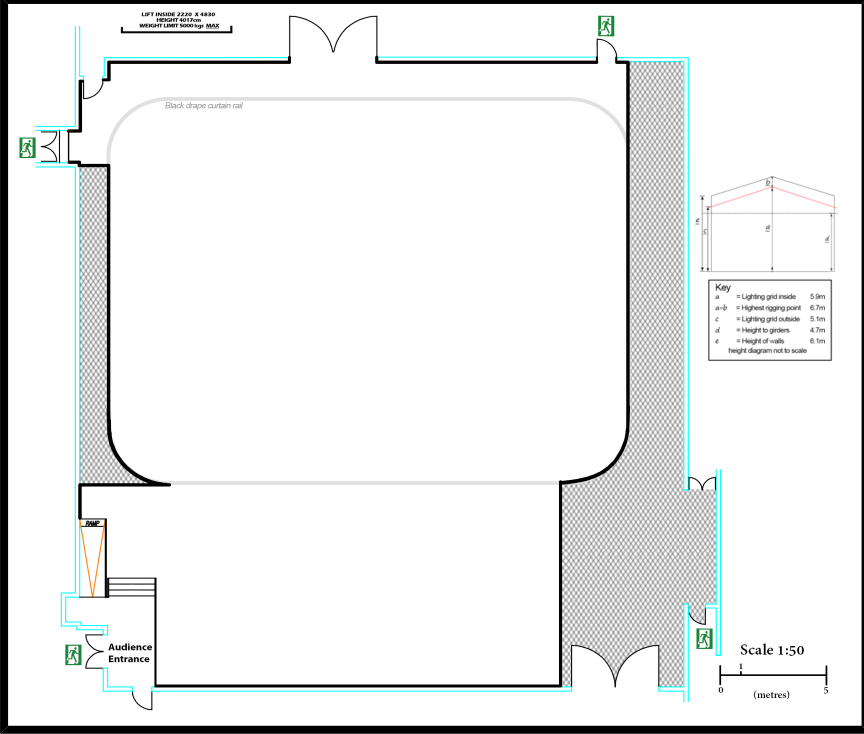
Microphones, Stands & D.I. Boxes	
Microphones	Shure: SM57 x2, Beta58 x5, SM58, Beta52, Beta91, Beta56 Sennheiser: E602, E604 x 3, E906 x 1 AKG: C451B x4 Rode: NT5 x 2 Audix: I5, D6
Microphone Stands	Assorted tall & short stands by Beyer/K&M
DI Boxes	BSS AR133 x 6 LD 02 active x 4 EMO stereo passive x 1

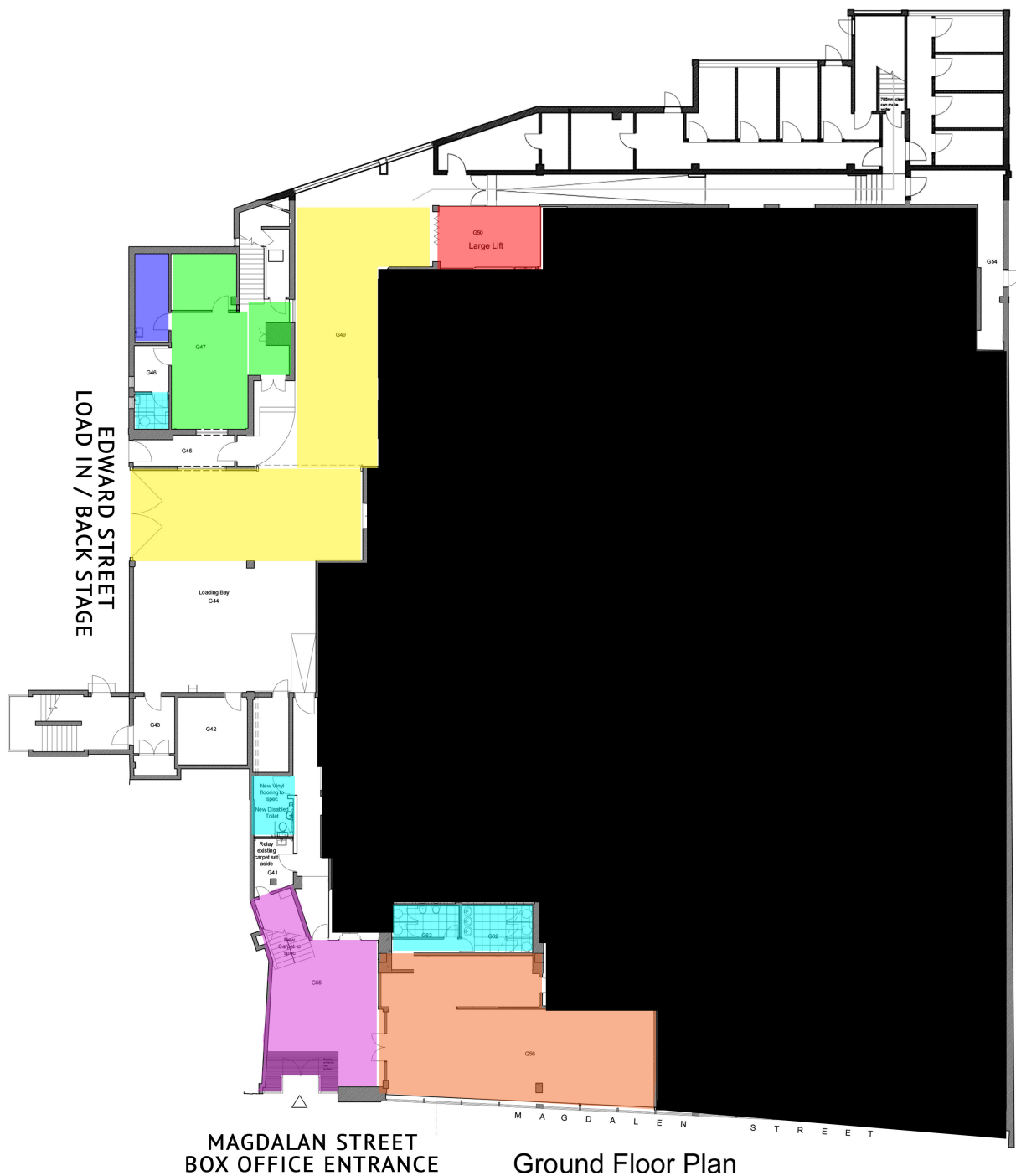
Lighting Specification		
Control	Avolites Tiger Touch II	
DMX Patch	Up to 4 x DMX512 universes from lighting desk. Up to 4 x Art-Net universes 360 x channels of ETC Sensor dimming	
Generics/Specials	Pani HVM1200 Followspot x 1	UV Spotlight S x 8
	1K PAR Cans x 49	2kw Castor x 16
	1K Fresnels x 37	5/3kw Pollux Bambino x 24
	1K Short (Floor) PAR Cans x 15	Showtec Sunstrip Active x 40
	2.5kw CCT Silhouette Spot (28-58deg) x 4	Pixel Line 1044 LED batten x 10
	Iadi Fill Mk2 Strand x 6	Arri 1k x 2 / Arri 2k x 4
	575w Source 4 Profile (19deg) x 2	Showtec Pixeltrack MK2 LED batten x6
Floods	2.5/5kw Desisti Botticelli x 4	
Moving Heads	Clay Paky Alpha Beam 700 x 24 StudioDue CS4/C 250 Moving Head PAR Cans x 6 Martin Mac 2000 x 8 Chauvet Intimidator x 4 Vari-Lites VL1000 Moving Head Source 4 x 4	
Special Effects & Pyrotechnics	Martin Atomic Strobes x 7 Rosco X24 fx Projectors x 2 Jem Glaciator Fog Machine x 1 Jem Compact Hazer Pro x 1 Look Solutions Unique Hazer x 2 CO2 Cannons x 4 Chauvet Funfetti Shot x 2 Le Maitre Salamander Flame Cannon x 4 (Red/Green/Natural Flame) Large assortment of gerbs, smoke, glitter (Use of pyrotechnics may incur cleaning costs)	

Video & Projection Specification	
Video Wall & Displays	18 x NEC UNV464 LED Monitors arranged in a horizontal line 20 x Martin LC 2140 LED Wall Panels <i>(Bespoke graphics available for each if required)</i> 1 x Wheeled LG 42" HD LCD Monitor
Projection	5 X Christie LWU 505 Projectors and screens.

Filming & Gallery Specification	
Director	RTS KP-32 comms panel 2 x NEC Multeos M46-AV 46" configurable HD multiviewer screens 12 x configurable JVC DTV20-L1D calibrated HD monitors with tallies
Floor	All cameras run on either Vinten Quattro or Fulmar pedestals and are connected to Racks via the LEMO Hybrid fibre/electrical system (3K.93C). We have a custom tower for operator control at height and cradles for mounting in the grid at 4m70 if a lock off is preferred.
Cameras	7 X Sony HDC 1500 cameras 4 X Canon XJ27 box lenses 1 X Canon HJ17 lens 1 X Canon HJ11 lens 3 X Autoscript Autocue heads
Sound	Calrec Alpha Digital Broadcast Desk with Bluefin- 48 inputs. Desk can run channels in mono, stereo and 5.1 configurations simultaneously if required. All channels via MADI to multitrack recorder if desired. 5.1 mixing and monitoring by Genelec 2.0 Mixing and monitoring by ATC 56" Configurable HD multiviewer
Microphones	6 X Sennheiser SK 5212-ii L wireless lavalier mics plus EM 3732-11 receivers 2 X Sennheiser SKM 5200-ii BK-L Handhelds plus EM 3732-11 receivers
IEM	5 X IFB Channels of Sennheiser ew300 iem available (3 X 2 stereo transmitters)
Outboard	EQ and reverb by Klark Teknik and Yamaha 2 x Stereo NEVE Compressors 1 X Shure SCM810 mic Intellimixer for assistance in simultaneous microphone environments
Floor Foldback	Studio floor foldback by D&B and Mackie (all mounted in grid)
Comms	12 x TR800 beltpack transceivers for the floor or production.

Gallery	
Racks	<p>Lemo SMPTE fibre/power patch panel for all camera points on studio floor and in the grid.</p> <p>Patch testing monitors available to confirm patch prior to camera testing</p> <p>7 X Sony HDCU 900 camera control units</p> <p>1 X Pixel Power Clarity graphics system</p> <p>1 X Pro-bel Pyxis 9002 router matrix with panels</p> <p>Range of Crystal Vision up/down convertors, synchronisers, distribution amplifiers and embedders.</p> <p>K2 Media Client, 3 channels video playback, 1 channel record.</p> <p>Sony Digi-beta and DVCAM tape decks (in CAR, 1 Floor below. Patches available)</p> <p>RTS Telex Talkback</p>
Engineering	<p>1 x Sony MSU-1000 Master RCP Controller</p> <p>6 x Sony RCP 750 remotes (for HDC1500 cameras)</p> <p>1 x Sony RCP-920 remote</p> <p>2 x JVC DTV20-L1D colour calibrated HD monitors</p> <p>9 x JVC configurable monitors for camera feeds</p> <p>1 X Pro-bel Pyxis 9002 HD router</p> <p>2 X Tektronix WFM5000 Waveform monitors</p> <p>2 X Rogers LS3a/5 monitors and selectable audio sourcing</p> <p>RTS Telex Talkback</p>
Production	<p>1 X Grass Valley Kayak HD vision mixer with chroma key licenses</p> <p>1 X Grass Valley K2 Media Server- 3channel playback / 1 channel record (integrated with mixer or standalone operation)</p> <p>1 X WinPlus Autoscript Autocue Controller workstation</p> <p>1 X PixelPower Clarity graphics workstation</p> <p>8 x Convergent Design Flash recorders for ISO outputs</p> <p>8 X BlackMagic Hyperdeck SSD recorders</p> <p>2 Dock Recorder for Programme output</p> <p>RTS Telex Talkback</p>
Misc.	<p>HD Screens are provided with information on ISO records, CapGen, HD Black status and each media player as well as camera, preview and programme outputs.</p>
Green Screen	Dedicated Green Screen studio.
Health & Safety	
PAT Testing	<p>All equipment brought into Epic Studios must have a current Portable Appliance Test (PAT) certification. Epic Studios' management reserve the right to refuse permission for event organisers to use equipment if a valid certificate cannot be produced.</p>
Materials	<p>All materials brought into Epic Studios must be fully fireproofed.</p>

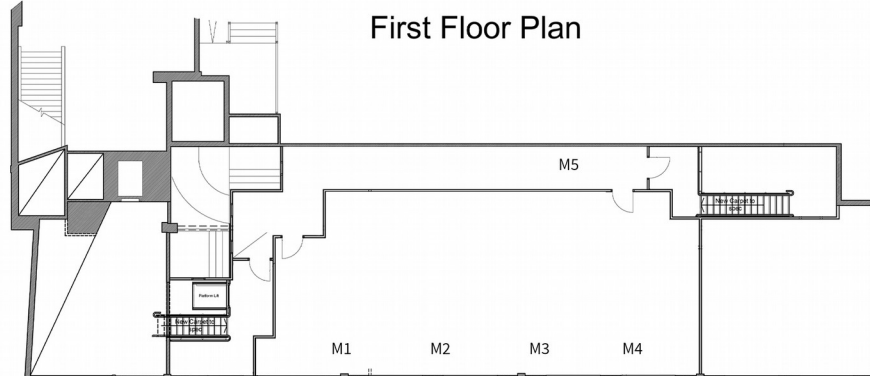




- Load in Yard
- 5 Ton Load in Lift
- Main Epic Office
- First Aid Room
- Toilets
- Box office / Customer Entrance
- Cafe



First Floor Plan



Mezzanine Plan